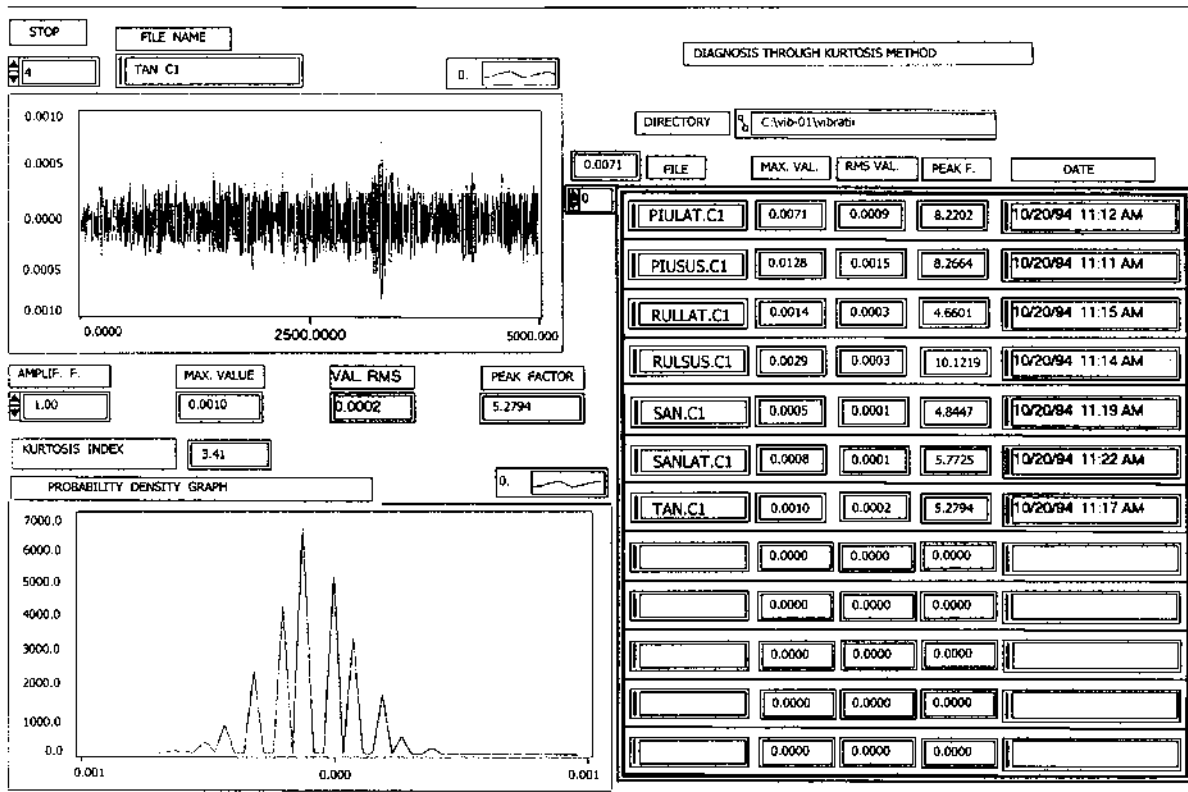


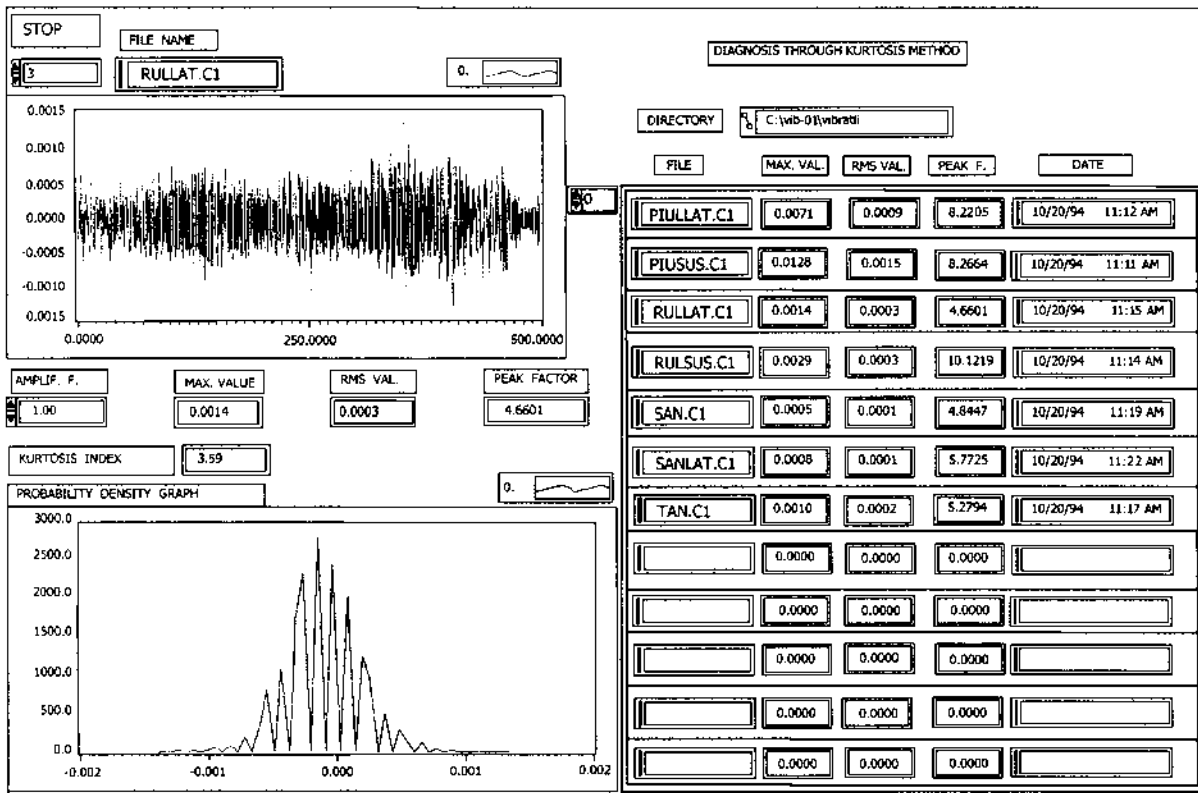
# **Appendix 1: Surface Diagnosis Through Virtual Instrumentation**

## **A1.1 SURFACE DIAGNOSIS**

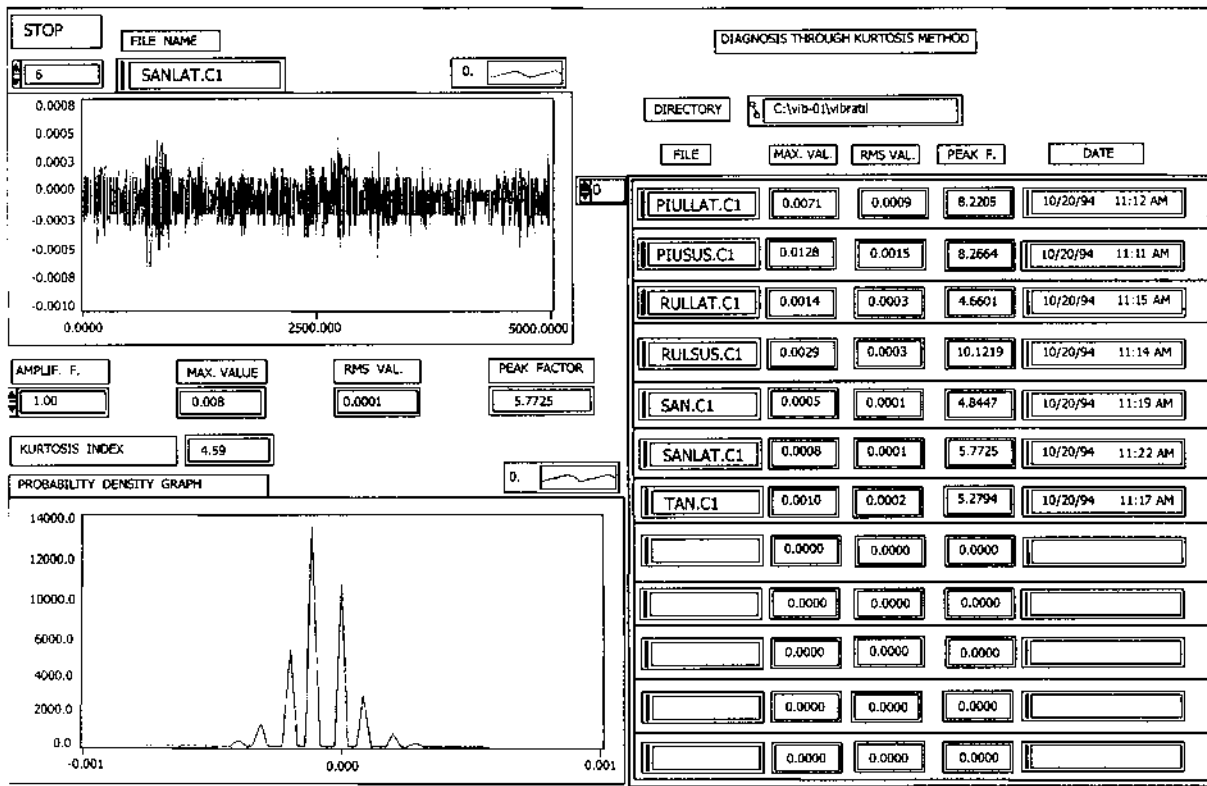
### **A1.1.1 INDKURT Virtual Instrument Applied to Some Elements of the Feed Kinematic Chain Structure (Tested Physical Model)**



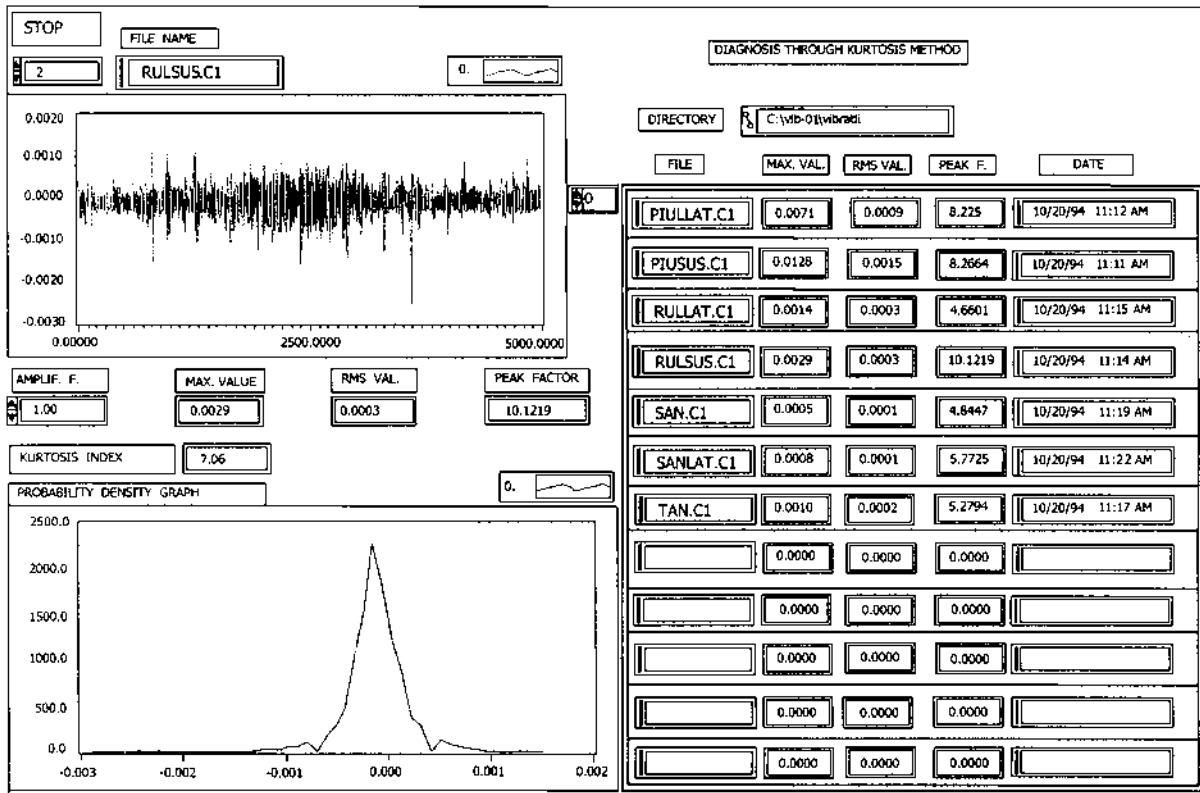
**FIGURE A1.1** Signal captured from the ways (guidings) of the saddle—ways type tankettes with rolls. Diagnosis by Kurtosis method.



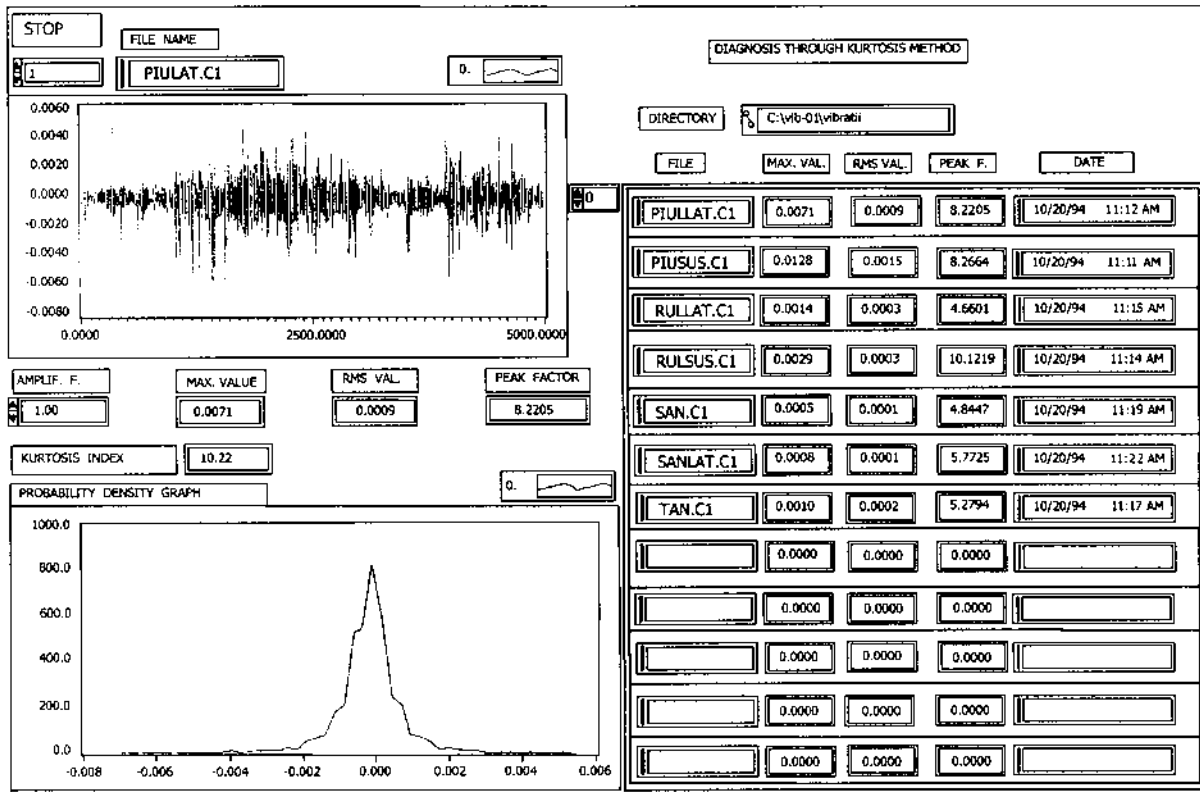
**FIGURE A1.2** Signals captured from the font ball bearing of the leading screw for lateral location. Diagnosis by Kurtosis method.



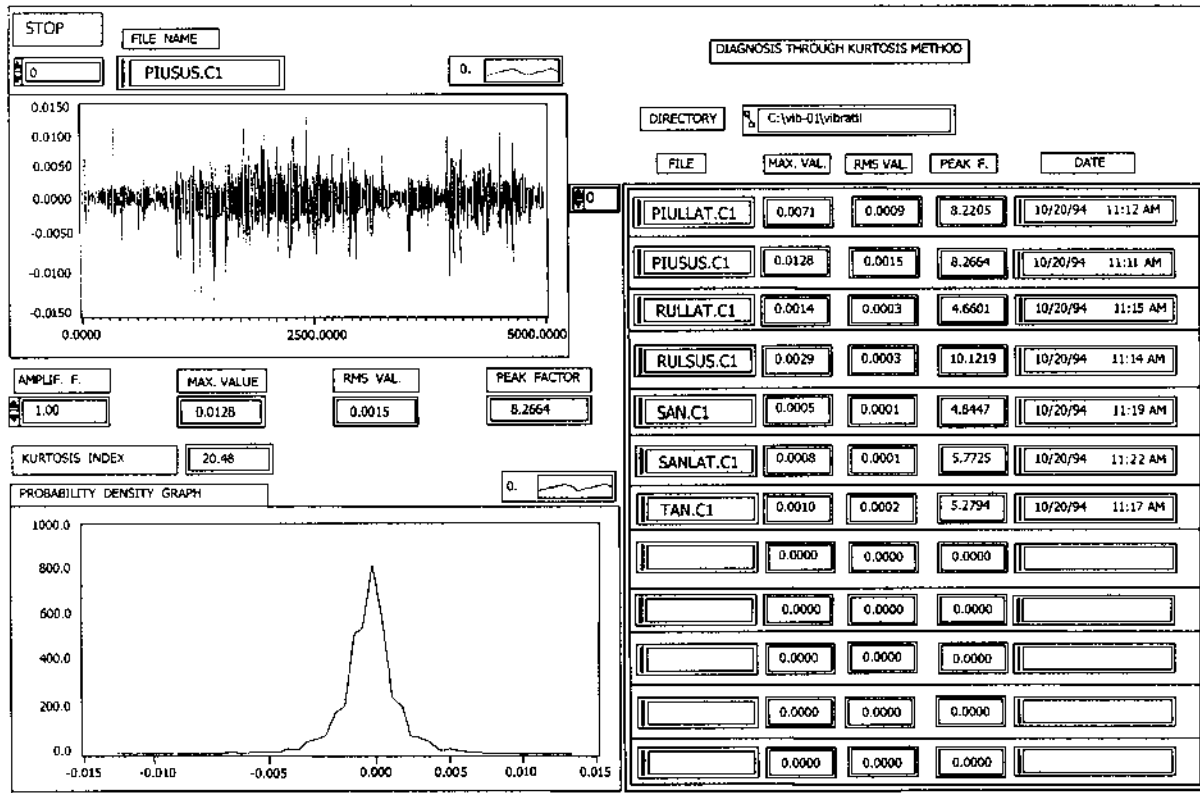
**FIGURE A1.3** Signal captured from the longitudinal saddle of the feed kinematic chain. Diagnosis by Kurtosis method.



**FIGURE A1.4** Signals captured from the front ball bearing of the leading screw for top location. Diagnosis by Kurtosis method.



**FIGURE A1.5** Signal captured from the nut of the screw-nut mechanism with balls—lateral location. Diagnosis by Kurtosis method.



**FIGURE A1.6** Signal captured from the nut of the screw-nut mechanism with balls—top location. Diagnosis by Kurtosis method.